

SP SizeControl

SP SizeControl from SP Wood Technology helps you to:

- measure faster.
- prevent errors during measurements.
- save the measurements in a SQL database with a push of a button.
- supply the measurements to every person inside the network as soon as the measurement is saved.
- administer your target sizes.
- follow-up and control the process.

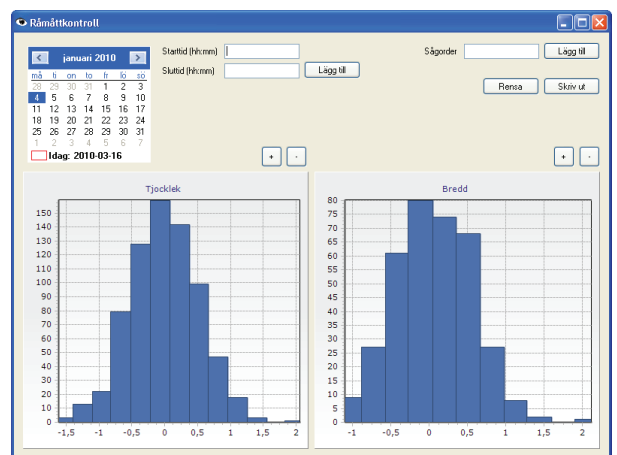
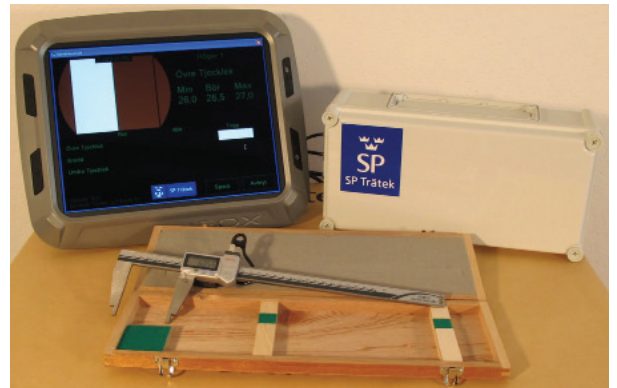
Streamline your measurements

SP SizeControl helps you to streamline your manual measurements of the board sizes. It helps the operator to judge if the sizes are approved according to the set target sizes and limits. This combined with the faster execution creates a positive change of the attitude and makes the work around optimizing the sizes easier. Since all the measurements are saved in a database the results are available for all personnel that need access to it, e.g., the operator who is controlling the saw line can instantaneously see the green sizes for each piece and then take the right steps.

Flexible system

The SP SizeControl system consists of a PC integrated inside a 15" touchscreen, caliper with wireless transfer and software developed for industrial sawmill use. You can easily change or add new calipers. There is also an extra option with gauge and software for measurement of the mismatch that can occur from double-arbor split saws.

The system has a module with tools to analyze historical measurements. You can create tables, line plots and histograms for different periods of time. The data, down to single measurements, can also easily be exported to MS Excel or other programs for further analysis.



SP Wood Technology
Simon Dahlquist
Skeria 2
SE-931 77 SKELLEFTEÅ
SWEDEN
+46 10 516 62 54
simon.dahlquist@sp.se

SP Wood Technology
Fredrik Persson
Skeria 2
SE-931 77 SKELLEFTEÅ
SWEDEN
+46 10 516 62 27
fredrik.persson@sp.se



SP Wood Technology is a major player in the development of the new bio based society. Our research and development activities are dominated by large national- and international projects as well as industry projects. We are also actively involved in standardization through CEN and ISO. SP Wood Technology has qualified resources for research as well as testing for a range of materials and products.

The department of Processing and Processes supplies the wood working industry with measuring tools developed from extensive research activities as well as from customer demands. Processing and Processes supply the industry with development of new technology, methods, and processes in order to give the wood mechanical industry possibilities to deliver high quality products in a cost-efficient way.

Products	Services (a small selection)
SP Bark On-Line	3D-visualisation
SP DrySim	Programing, Database layout, Data analysis and Long-term data logging
SP GrainAngle On-Line	Deformation control
SP HeartWood On-Line	Energy measurements
SP PlankProfile On-Line	Lean production and Preventive maintenance
SP Quality On-Line	Gluing and drying
SP SizeControl	Sorting rules
SP TimberNav	Tracking
	Downtime monitoring
	Testing

SP Wood Technology

Borås, Skellefteå, Stockholm, Växjö
 Address: Box 857, 501 15 Borås, Sweden
 Tel: +46 10 516 50 00
www.sp.se